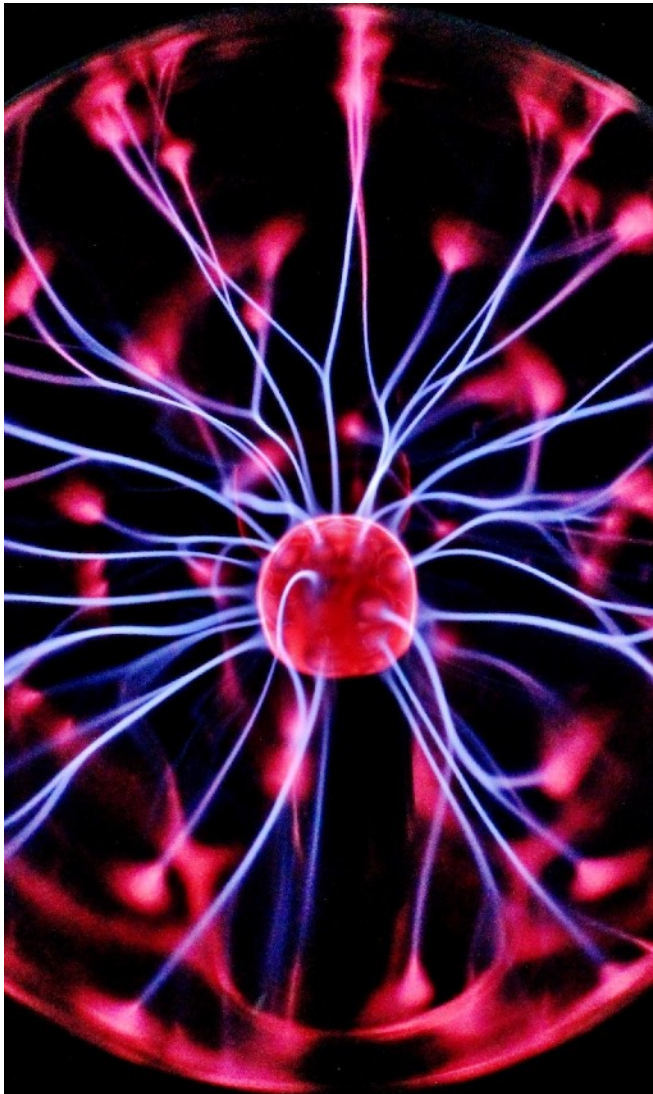


## SMART CONNECT: EES

ENERGY EFFICIENCY  
SOLUTION FOR 4G & 5G



Reduce your 4G & 5G Radio Access Network (RAN)'s energy use with a highly-trained Artificial Intelligence (AI) system running on our Internet-of-Things (IoT) platform.



Get the most out of your 4G & 5G network investment.

With 5G equipment consuming 3X more energy than 4G/LTE, Smart Connect: EES is designed to help mobile network operators achieve the best energy efficiency without compromising user experience.

Save energy without risk of reduced network coverage.

Our self-learning AI is able to identify wastage and apply multiple strategies in reaction to your network's performance in realtime. It takes into account all factors of your network to make its decisions.

Integrates with your existing RAN and NMS/OSS.

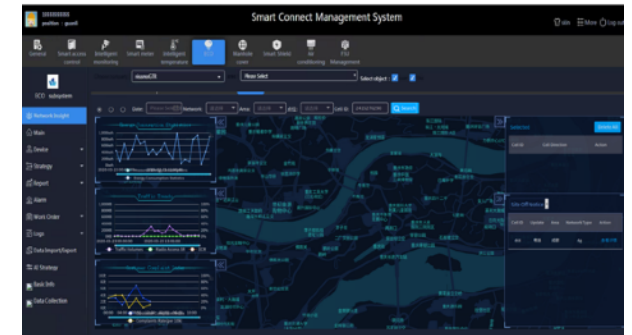
Smart Connect EES does not replace your existing equipment nor does it disrupt your organisation's technology acquisition roadmap. Our solution supports multi-vendor integration and interoperability.

Enterprise-class platform with all the features you'd expect.

Our platform's full suite of features also allows you to perform multiple functions, such as monitoring energy use, managing user experience & network KPIs, work order & policy management, and more.

## What is Smart Connect: EES?

Smart Connect: Energy Efficiency Solution (EES) uses advanced AI algorithms to monitor your Radio Access Network (RAN) and execute energy saving strategies automatically. It runs on our Smart Connect Internet-Of-Things (IoT) platform with enterprise features.



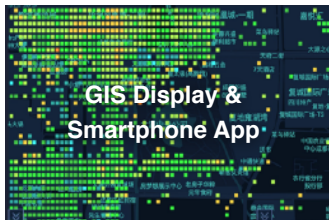
Smart Connect: EES (IoT Platform & AI)

Our AI processes realtime data from your telecom vendor's equipment in data centres as well as on-site to identify network traffic patterns that allow capacity to be scaled down without affecting coverage.



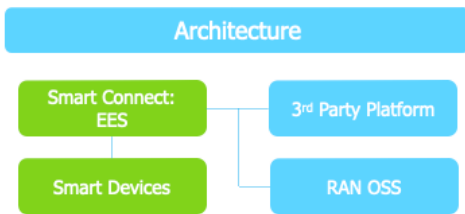
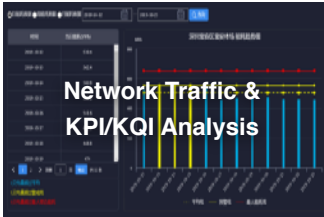
## AI FEATURES: PREDICT

Our AI will undergo model training using your network's data to not only identify but even predict traffic trends in realtime that humans can't find.



## AI FEATURES: PROPOSE

The AI will propose the best energy saving strategy for each location/block/site/cell/etc. With self-learning, the AI improves itself over time.



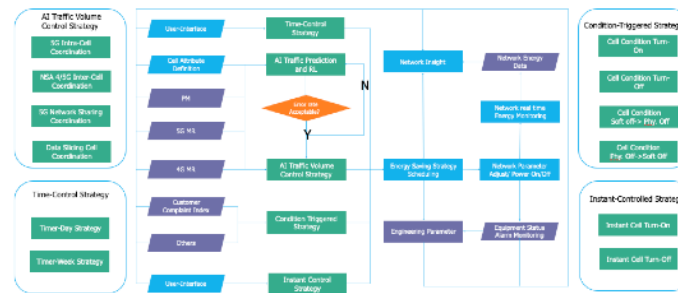
- Power Usage Display**  
Real-time monitoring of 4/5G network energy consumption status
- Policy Management**  
Manage 4/5G network energy saving strategies anytime, anywhere
- One Click Navigation**  
Accurate and fast site location identification



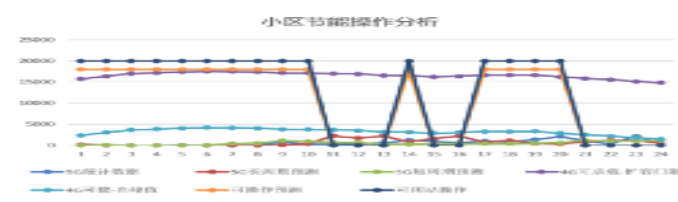
- Device Management**  
Real-time monitoring of device working status
- Push Alarm function**  
Alarm information is pushed in real time and responded quickly
- Work Order Management**  
Automated Work order dispatch system

## AI FEATURES: STRATEGISE

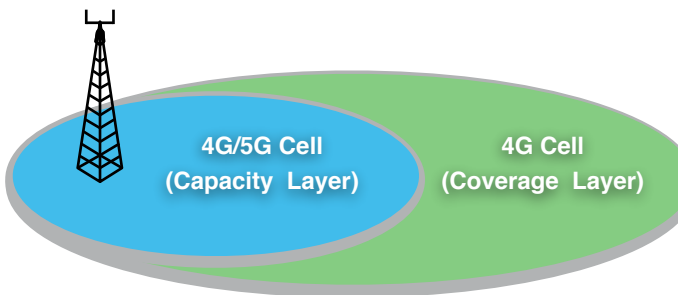
The AI can choose from a list of advanced strategies that was developed by our data scientists. The AI scale capacity up or down depending on coverage.



Automatic Energy Saving Strategies



Dynamic Activation & Optimisation



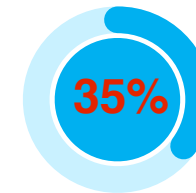
Advanced Energy Saving with 4G & 5G Cell Coordination

## AI FEATURES: ACTIVATE

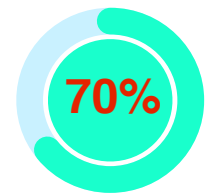
At the perfect time, the AI will activate the strategies automatically. It will coordinate & gracefully perform equipment power up/down to save energy.

# Proven In China To Achieve Energy Savings of 35% to 70%.

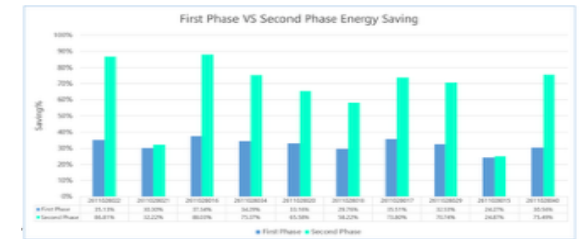
Talk to us today to learn how Smart Connect: EES is delivering 35-70% savings in electricity bills every month for mobile network operators in China.



Conservative Strategy



Aggressive Strategy



Exceptional Results That Exceeds Vendor Estimates

### Contact Us:

Chan Ching Wen  
+60 17 209 5556  
cwchan@ecom.com.my



Kevin Lim  
+60 16 668 2988  
ck.lim@ecom.com.my

E-com Solution Sdn. Bhd. (526826-T)  
5-G, Jalan Dravidan,  
Bandar Baru Ampang, 68000,  
Ampang, Selangor D.E., Malaysia.

Tel: +6 03 4270 2812  
Fax: +6 03 4270 3822  
Enq: admin@ecom.com.my  
Web: www.Ecom.com.my

